

Taylor Quick Tips

Taylor Color Proofing and Color Settings

Visit us on the web: www.taylorspecialtybooks.com

QUARK Color Settings

- 1) Choose Quark CMS (Color Management System) and select the Taylor ICC Profile and Settings as indicated on the RGB tab.
- 2) Select the Taylor ICC Profile and Settings on the CMYK tab. The Hexachrome Settings are not used.

If TPC_Std_CMYK.icc is not available in the profile list to select, copy it onto the hard drive and proceed to step 3. The Profile Manager will be grayed out unless Color Management is active.

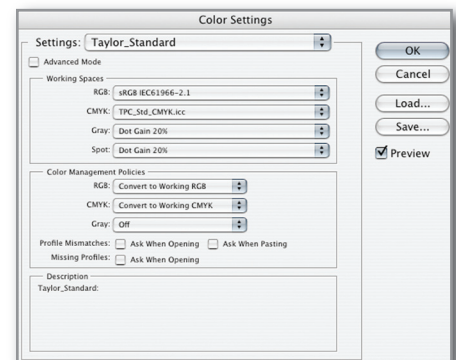
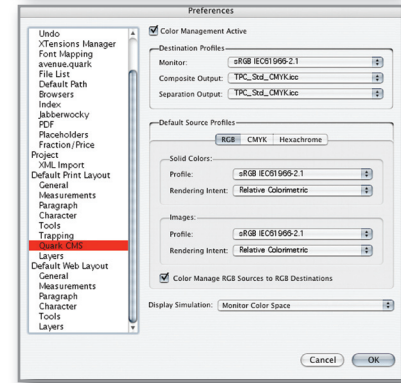
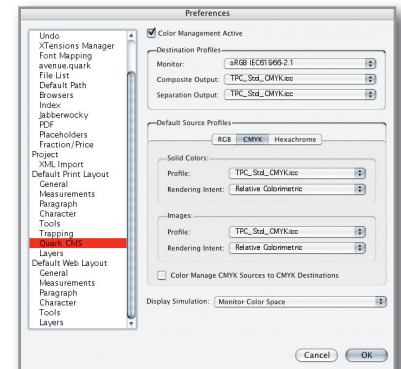
- 3) Select the Profile Manager from the Utilities drop down menu.
- 4) Choose the Select or Browse button and navigate to the folder the ICC profile was copied into and choose Select.
- 5) Select the Update button and the Taylor ICC Profile will be added to the list in the Profile Manager.
- 6) Repeat steps 1 and 2 choosing the Taylor ICC Profile in the appropriate fields.

PHOTOSHOP Color Settings

- 1) Load the 'TPC_Std_CMYK.icc' profile to the workstation:
(Mac OS X) Library/ColorSync/Profiles
(Windows 2000) WinNT/System/Spool/Drivers/Color
(Windows NT) WinNT/System32/Color
(Windows XP) Windows/System 32/Spool/Drivers/Color
- 2) Load the 'Taylor Settings.csf' to the workstation:
(Mac OS X) Library/Application Support/Adobe/Color/Settings
(Windows) Program Files/Common Files/Adobe/Color/Settings
- 3) Launch Photoshop and select the Color Settings menu item.
- 4) Click on Settings and select Taylor Settings from the list.

Make sure that 'Working CMYK' is checked on the menu item View->Proof Setup.

To see approximately what the image will look like printed in your yearbook, go to View->Proof Colors.



Lastly, when saving the images (EPS or TIFF), make sure to click on the option to embed the ICC profile.